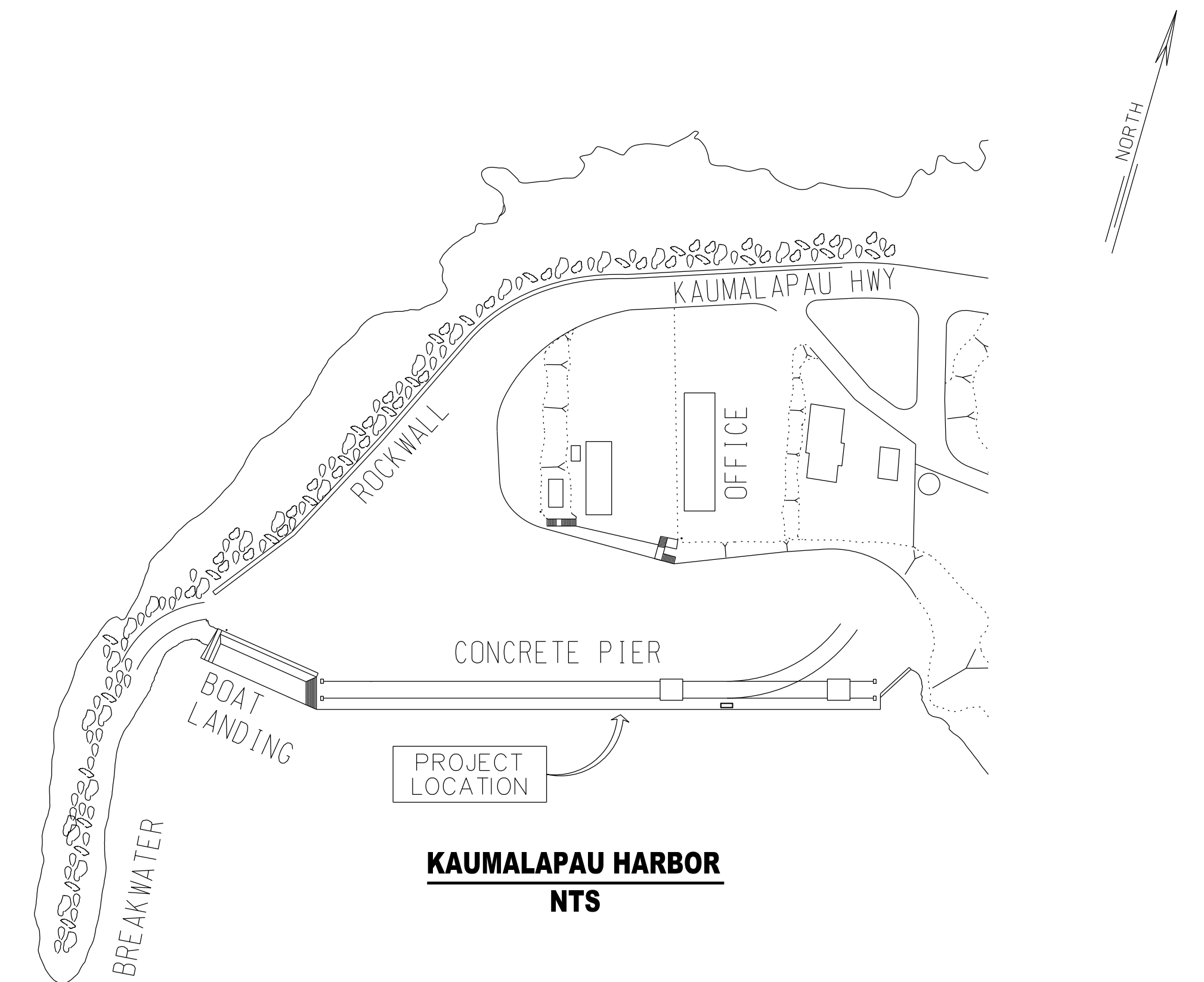
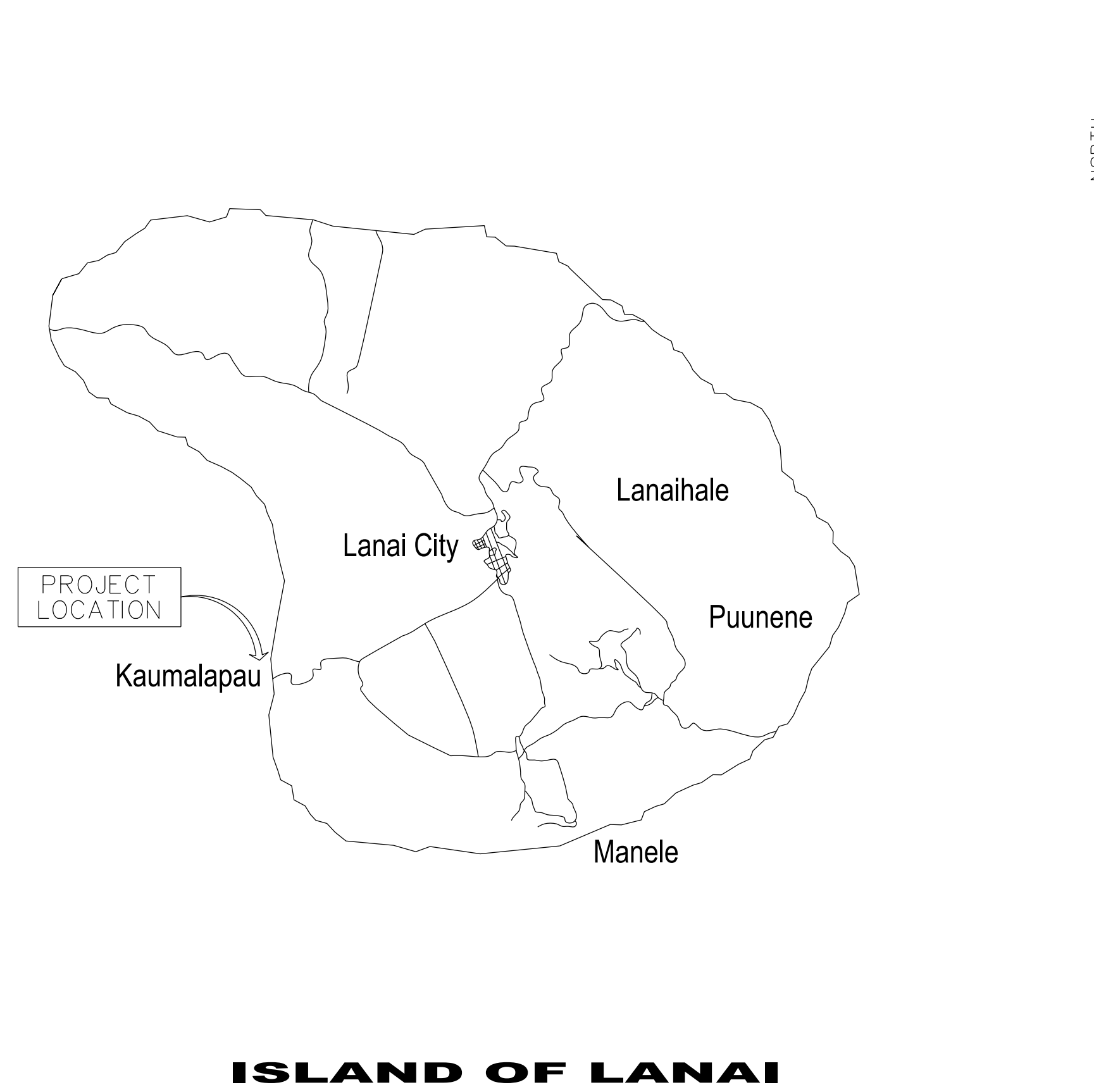
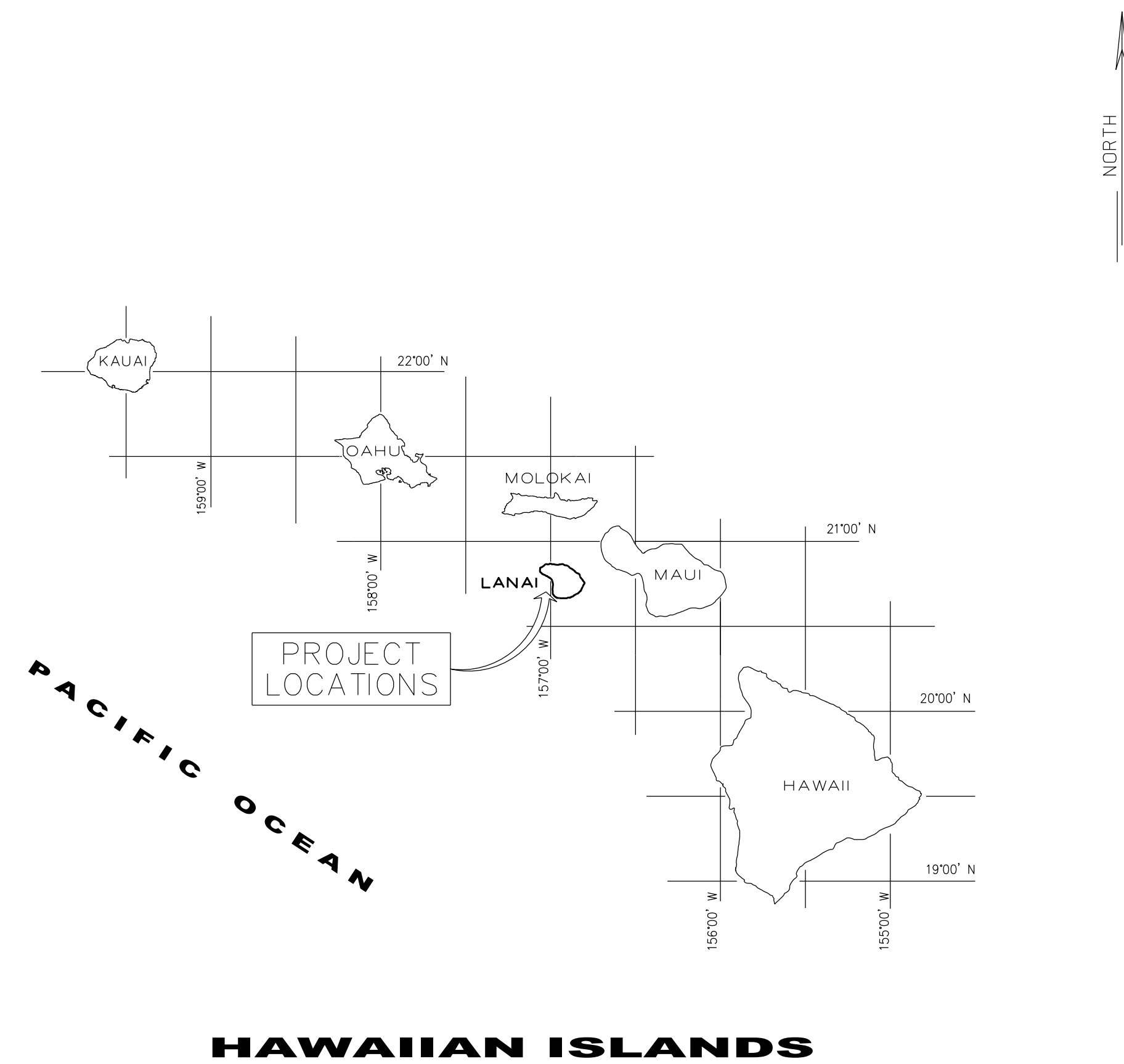


FENDER REPAIRS AT KAUMALAPAU HARBOR, LANAI

STATE OF HAWAII
DEPARTMENT OF TRANSPORTATION
HARBORS DIVISION

S30220

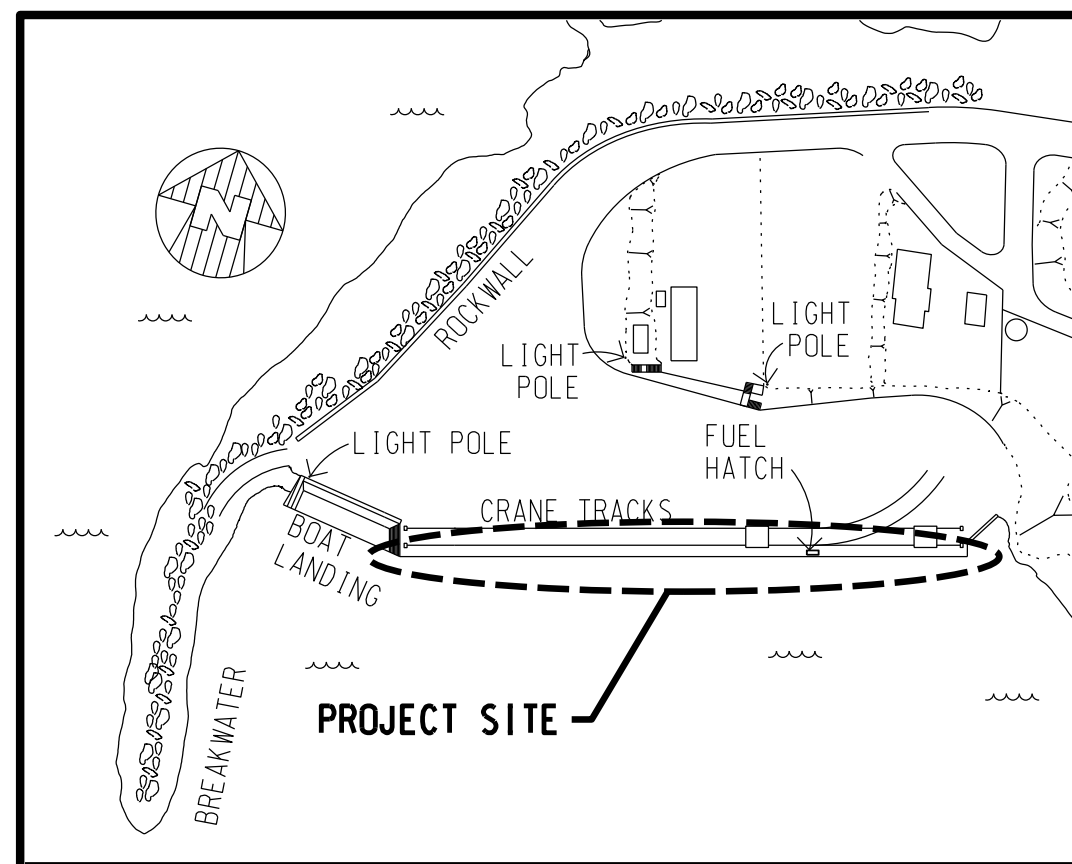


DEPARTMENT OF TRANSPORTATION
STATE OF HAWAII

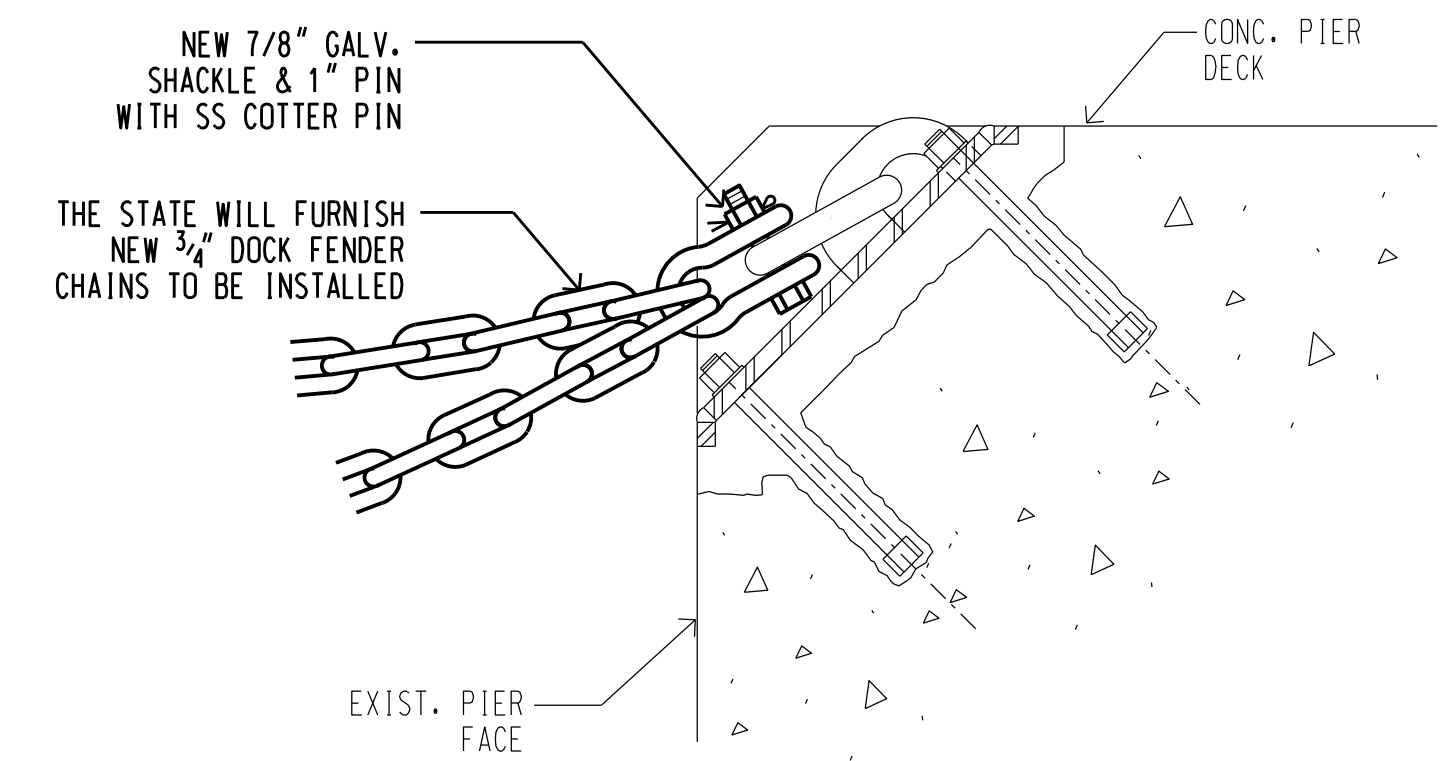
APPROVED BY: *W. E. Eaton*
FOR DIRECTOR OF TRANSPORTATION

DATE: Apr 26, 2023

SHEET
1
1 OF 2 SHEETS

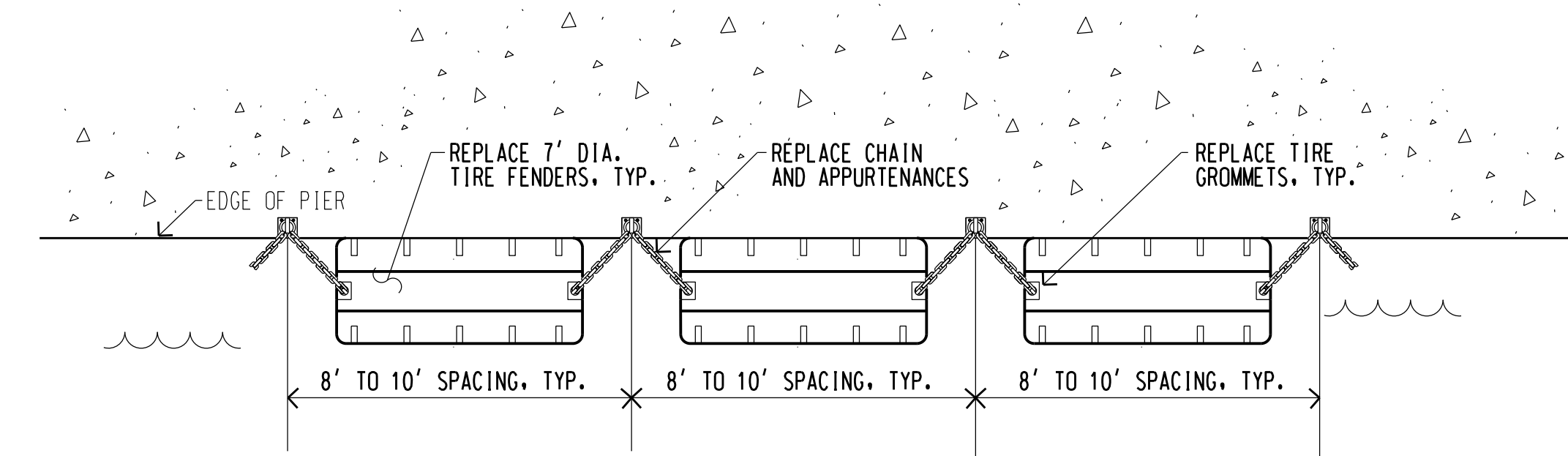


LOCATION MAP - KAUMALAPAU HARBOR

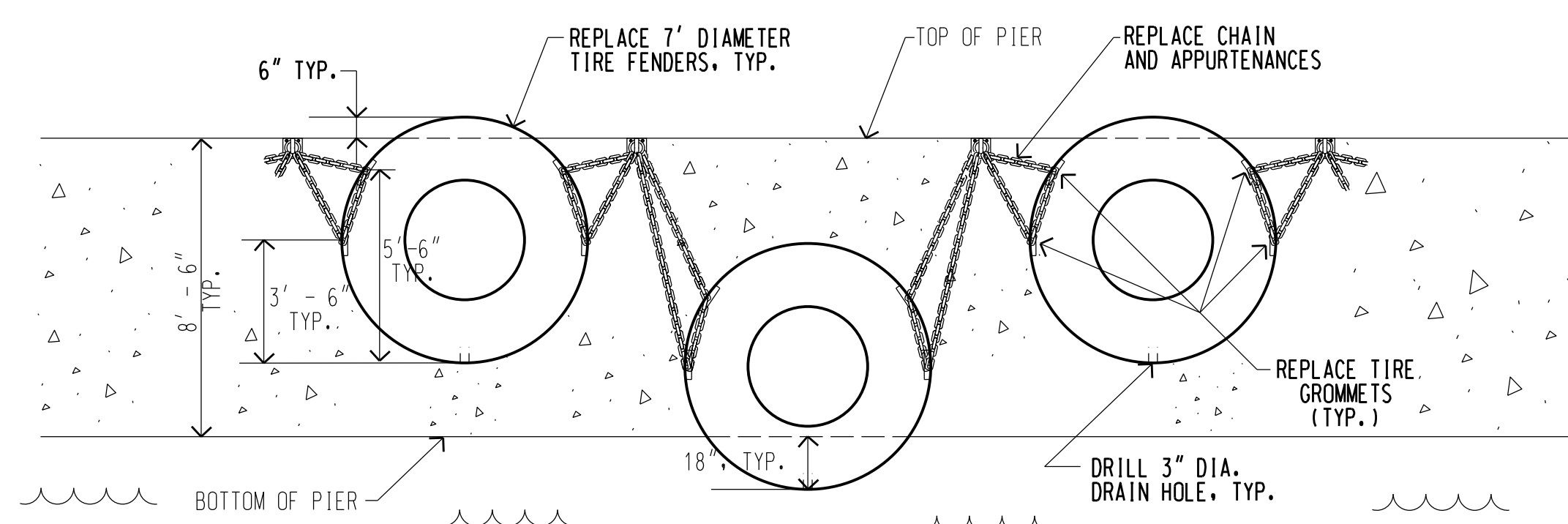


SHACKLE DETAIL

SCALE: 1 1/2" = 1' - 0"



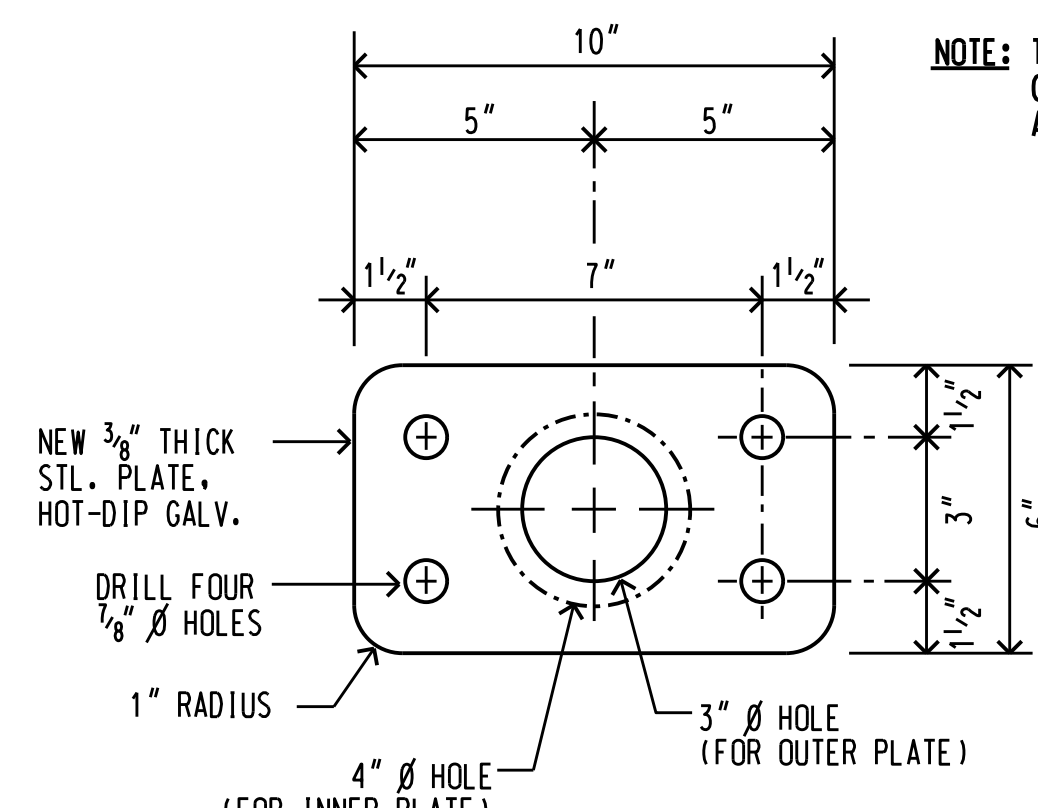
PLAN VIEW



ELEVATION VIEW

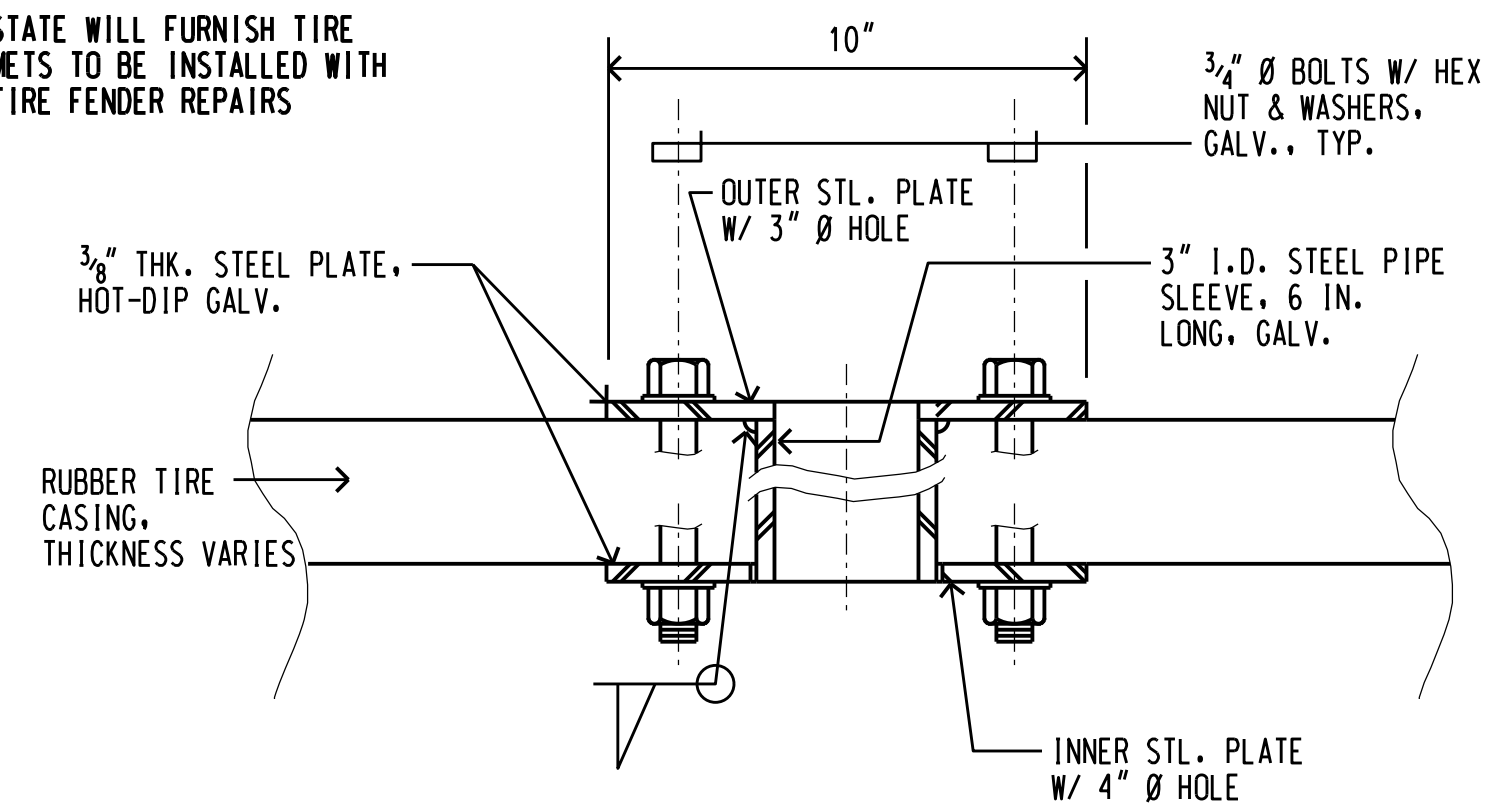
TIRE FENDER LAYOUT

SCALE: 1/4" = 1' - 0"



PLAN

NOTE: THE STATE WILL FURNISH TIRE GROMMETS TO BE INSTALLED WITH ALL TIRE FENDER REPAIRS

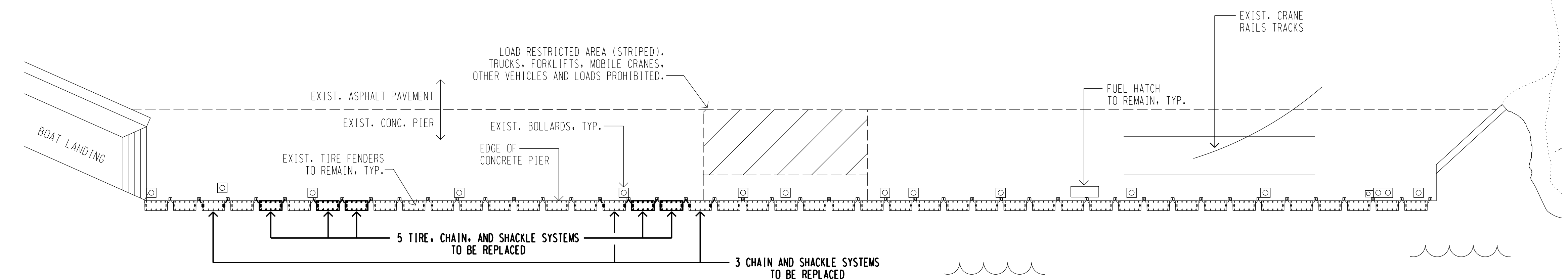


SECTION

TIRE GROMMET DETAIL

SCALE: 3" = 1' - 0"

- GENERAL NOTES:**
1. CONTRACTOR SHALL VERIFY CONDITIONS IN THE FIELD PRIOR TO BIDDING. EXISTING CONDITIONS ARE BASED ON THE BEST AVAILABLE INFORMATION. THE CONTRACTOR SHALL MAKE NO CLAIM FOR EXTRA COMPENSATION SHOULD ACTUAL EXISTING CONDITIONS DIFFER FROM THOSE SHOWN ON THE PLANS. THE CONTRACTOR SHALL VERIFY CONDITIONS AND DIMENSIONS IN THE FIELD PRIOR TO ORDERING MATERIALS.
 2. THE CONTRACTOR SHALL EXERCISE CAUTION TO PREVENT DAMAGE TO EXISTING STRUCTURES, UTILITIES AND EQUIPMENT IN THE AREA.
 3. THE CONTRACTOR SHALL COORDINATE ITS WORK WITH THE HARBORS DIVISION MAUI DISTRICT MANAGER AND THE CONSTRUCTION ENGINEER SO AS TO MINIMIZE INTERFERENCE WITH HARBOR OPERATIONS.
 4. NO HOT WORK WILL BE ALLOWED WHEN FUEL BARGES ARE BERTHED AT THE PIER. THE EXACT SCHEDULING OF THE WORK AND RESTRICTIONS ON THE CONTRACTOR'S ACTIVITIES WILL BE ESTABLISHED AT THE PRE-CONSTRUCTION MEETING.
 5. THE CONTRACTOR SHALL COMPLY WITH THE CLEAN WATER ACT AND THE STATE HARBORS DIVISION STORMWATER MANAGEMENT PROGRAM. NO POLLUTANTS ARE ALLOWED TO BE DISCHARGED DIRECTLY OR INDIRECTLY THROUGH THE HARBORS SMALL MS4 OR OTHER POTENTIAL PATHWAYS INTO HARBOR WATERS.
 6. THE CONTRACTOR SHALL SUBMIT A SITE-SPECIFIC BEST MANAGEMENT PRACTICES (BMP) PLAN AND HEALTH AND SAFETY PLAN TO HARBORS DIVISION CONSTRUCTION ENGINEER PRIOR TO THE START OF ANY CONSTRUCTION WORK.
 7. IN CASE OF RELEASE OF HAZARDOUS SUBSTANCE, OIL, OR ENCOUNTER CONTAMINATED SOIL, THE CONTRACTOR SHALL NOTIFY THE APPROPRIATE FACILITY PERSONNEL, EMERGENCY RESPONSE AGENCIES, AND REGULATORY AGENCIES FOLLOWING NOTIFICATION PROCEDURES, AND SHALL NOTIFY THE HARBORS DIVISION CONSTRUCTION ENGINEER IMMEDIATELY (I.E. WITHIN 24 HOURS). CONTACT INFORMATION MUST BE IN LOCATIONS THAT ARE READILY ACCESSIBLE AND AVAILABLE. CONTRACTOR SHALL NOTIFY THE HARBORS DIVISION ENGINEER BRANCH ENVIRONMENTAL HOTLINE (808-587-1962) AND DESIGNATED HARBORS PROJECT ENGINEER OF ANY ILLICIT DISCHARGE AND/OR SPILL/RELEASE THAT OCCURS ONSITE.
 8. ALL STRUCTURES AND PORTIONS OF STRUCTURES SHOWN ON THE PLANS ARE EXISTING UNLESS SPECIFICALLY NOTED.
 9. CONTRACTOR SHALL VERIFY CONDITIONS IN THE FIELD PRIOR TO PURCHASING ANY NEW ITEMS.
 10. SEE THE SPECIFICATIONS FOR ADDITIONAL INFORMATION.



SITE PLAN - KAUMALAPAU HARBOR

SCALE: 1" = 20' - 0"

REV	DATE	DESCRIPTION	BY	APPROVED
STATE OF HAWAII DEPARTMENT OF TRANSPORTATION HARBORS DIVISION				
JOB TITLE FENDER REPAIRS AT KAUMALAPAU HARBOR KAUMALAPAU HARBOR, LANAI, HAWAII				
SHEET TITLE PLAN, SECTIONS, DETAILS, NOTES				
DESIGNED BY:	JM	JOB NUMBER		SHEET
DRAWN BY:	JM	S30220		2
CHECKED BY:	AF			
DATE:	MARCH 2023	SCALE: AS SHOWN		
				2 OF 2 SHTS.